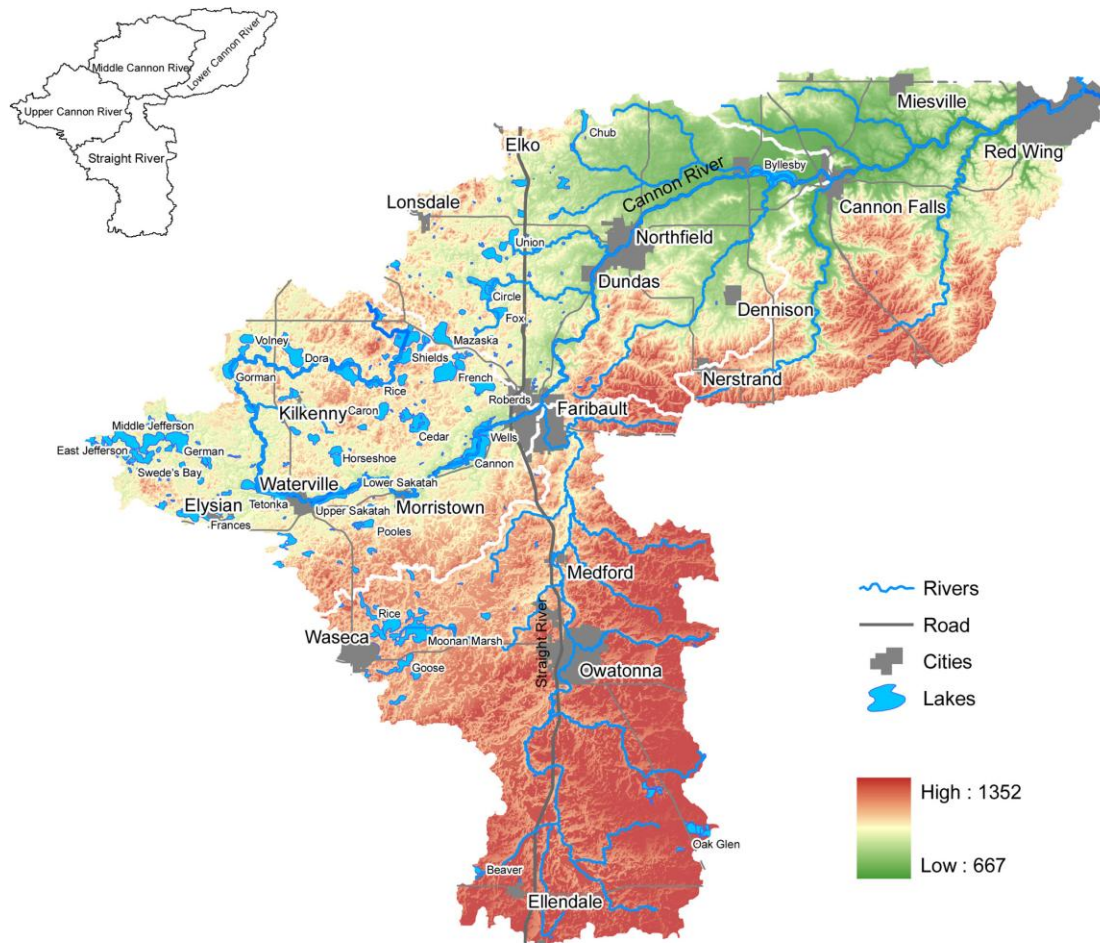


# CANNON RIVER WATERSHED MANAGEMENT STRATEGY 2011-2015



**PREPARED BY:**  
Cannon River Watershed Partnership

**FUNDING PROVIDED BY:**  
Minnesota Pollution Control Agency

June 30, 2011

**PROJECT TEAM**

Cannon River Watershed Partnership

Beth Kallestad

Aaron Wills

Lucas Bistodeau

Minnesota Pollution Control Agency

Justin Watkins

# TABLE OF CONTENTS

Chapter 1: Introduction

Chapter 2: Cannon River Watershed Characteristics

Chapter 3: Executive Summary of Cannon River Watershed Statistical Water Quality Trend Analysis

Chapter 4: Pollutants of Concern and Stressors

Chapter 5: Management Strategies Overview

Chapter 6: Priority Management Zones

Chapter 7: Civic Engagement

Chapter 8: Upper Cannon River Lobe Management and Monitoring Strategy

Chapter 9: Straight River Lobe Management and Monitoring Strategy

Chapter 10: Middle Cannon River Lobe Management and Monitoring Strategy

Chapter 11: Lower Cannon River Lobe Management and Monitoring Strategy

## Appendices

- A. Signs of Progress: The Status of the Cannon and Straight Rivers
- B. MPCA Watershed Approach to Condition Monitoring and Assessment
- C. Cannon River Watershed Statistical Water Quality Trend Analysis
- D. Water Monitoring Work and Projects in the Cannon River watershed through 2010
- E. Summary of Lake and Stream Monitoring Data in the Cannon River watershed
- F. Upper Cannon River Lobe List of Assets Summary Table
- G. Straight River Lobe List of Assets Summary Table
- H. Middle Cannon River Lobe List of Assets Summary Table
- I. Lower Cannon River Lobe List of Assets Summary Table
- J. Cannon River Watershed NPDES/SDS Permits

## Tables

Table 1. *Cannon River Watershed Population 1960-2000*

Table 2. *Minnesota's Lake Eutrophication Criteria*

## Page

Chapter 2-3

Chapter 4-5

Table 3. <i>Draft River Eutrophication Criteria for Minnesota</i>	Chapter 4-5
Table 4. <i>Examples of phase 1 implementation activities</i>	Chapter 5-14
Table 5. <i>NPDES/SDS Permit Types in the Cannon River Watershed (2011)</i>	Chapter 5-16
Table 6. <i>Metropolitan Council grading criteria for metropolitan lakes</i>	Chapter 8-2
Table 7. <i>Met Council grades for Upper Cannon River lobe lakes</i>	Chapter 8-3
Table 8. <i>Number of acres that should have a 50 foot perennial buffer</i>	Chapter 8-6
Table 9. <i>Met Council grades for Straight River lobe lakes</i>	Chapter 9-2
Table 10. <i>Met Council grades for Middle Cannon River lobe lakes</i>	Chapter 10-2
Table 11. <i>Characteristics of a Healthy Trout Steam</i>	Chapter 10-4

Figures

Page

<i>Figure 1. Cannon River watershed lobes</i>	Chapter 1-2
<i>Figure 2. Watershed approach timeline</i>	Chapter 1-3
<i>Figure 3. Cannon River watershed</i>	Chapter 2-1
<i>Figure 4. Cannon River watershed counties</i>	Chapter 2-2
<i>Figure 5. Cannon River watershed population 1960-2000</i>	Chapter 2-3
<i>Figure 6. Historic flooding: Cannon and Straight Rivers</i>	Chapter 2-4
<i>Figure 7. Cannon River watershed land use by lobe</i>	Chapter 2-5
<i>Figure 8. Draft 2010 303(d) list map for the Cannon River watershed</i>	Chapter 4-2
<i>Figure 9. Summary of phased approach for TMDL implementation</i>	Chapter 5-13
<i>Figure 10. Cannon River watershed point source dischargers</i>	Chapter 5-16
<i>Figure 11. Upper Cannon River green corridor</i>	Chapter 8-8
<i>Figure 12. Judicial Ditch 2 and Judicial Ditch 2-Lateral 2</i>	Chapter 9-6
<i>Figure 13. Middle Cannon River Green Corridor</i>	Chapter 10-6
<i>Figure 14. Lower Cannon River Green Corridor</i>	Chapter 11-3
<i>Figure 15. Lower Cannon River watershed</i>	Chapter 11-5
<i>Figure 16. Trout Brook nitrate monitoring data</i>	Chapter 11-6
<i>Figure 17. Little Cannon River watershed e. coli study results 2008-2009</i>	Chapter 11-8